

BASTROP ISD
2017-18 PRELIMINARY
BUDGET INFORMATION

March 21, 2017

2017-18

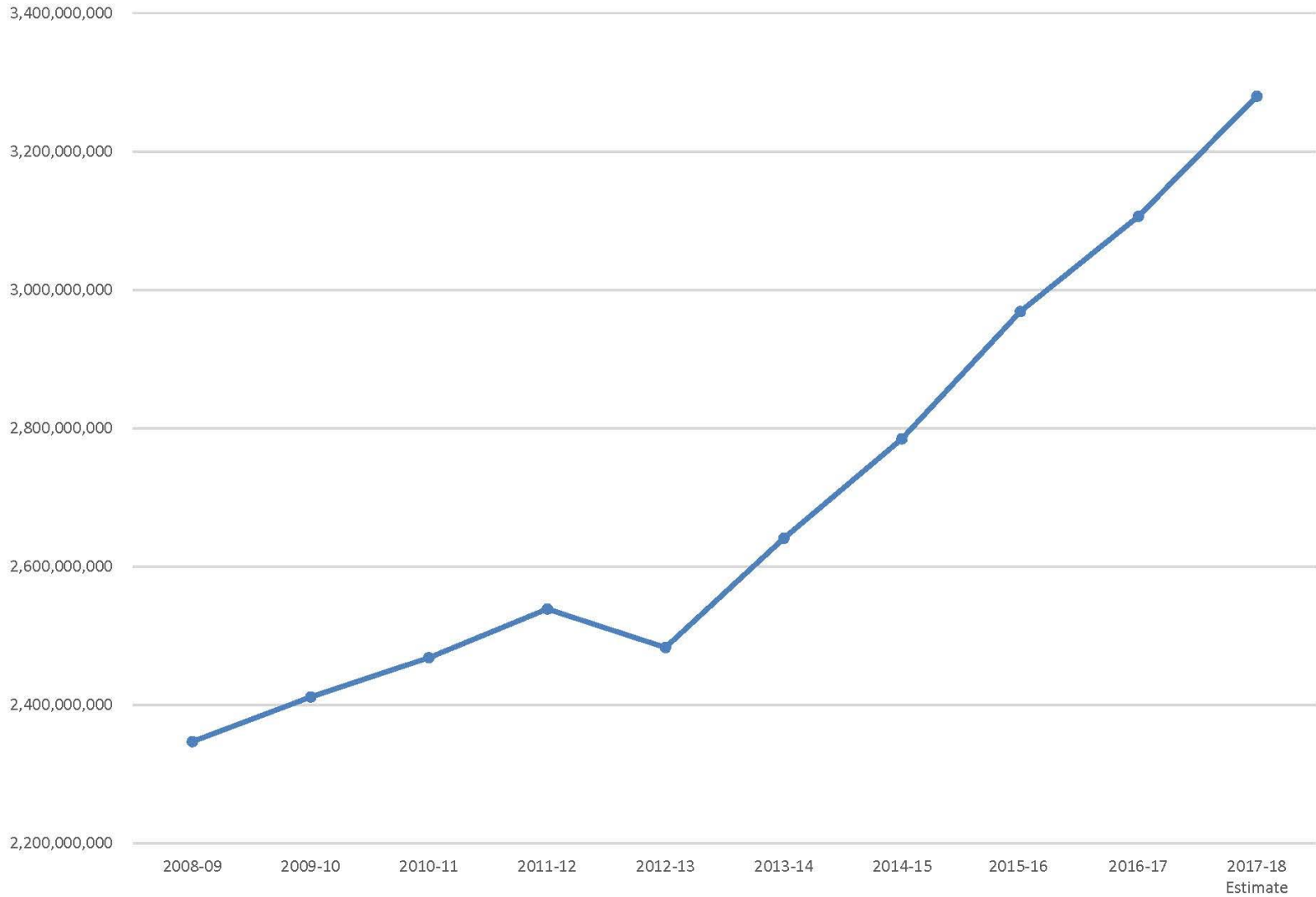
Budget Calendar

- Jan – Feb Budget Calendar Information
- March 21 Preliminary Budget Presentation
- Mar-Apr Principal & Director Meetings
- April 18 Preliminary Budget Presentation
- May 11 Budget Workshop (Date to be Determined)
- May 16 Proposed Budget Presentation
- **June 22 Budget Adoption**
- August 15 Proposed Tax Rate Presented
- September 19 **Tax Rate Adoption**

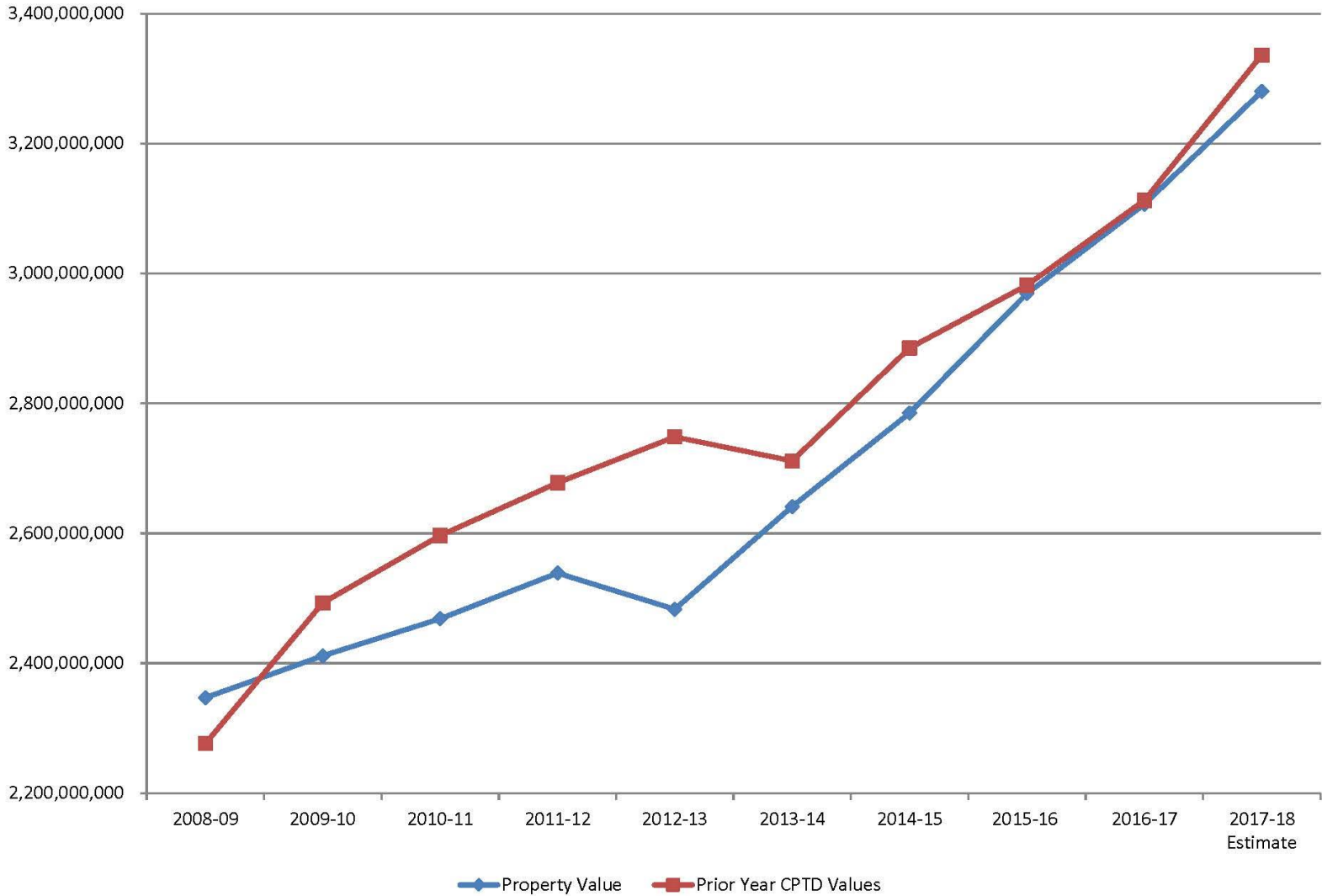
2017-18
Preliminary Budget Assumptions

- Estimated Enrollment 10,888
- Average Daily Attendance 10,109
- Tax Rate M&O \$1.04
- CPTD Values 3,336,205,139
- Preliminary Property Value 3,280,130,703
- Debt Service Tax Rate \$0.401

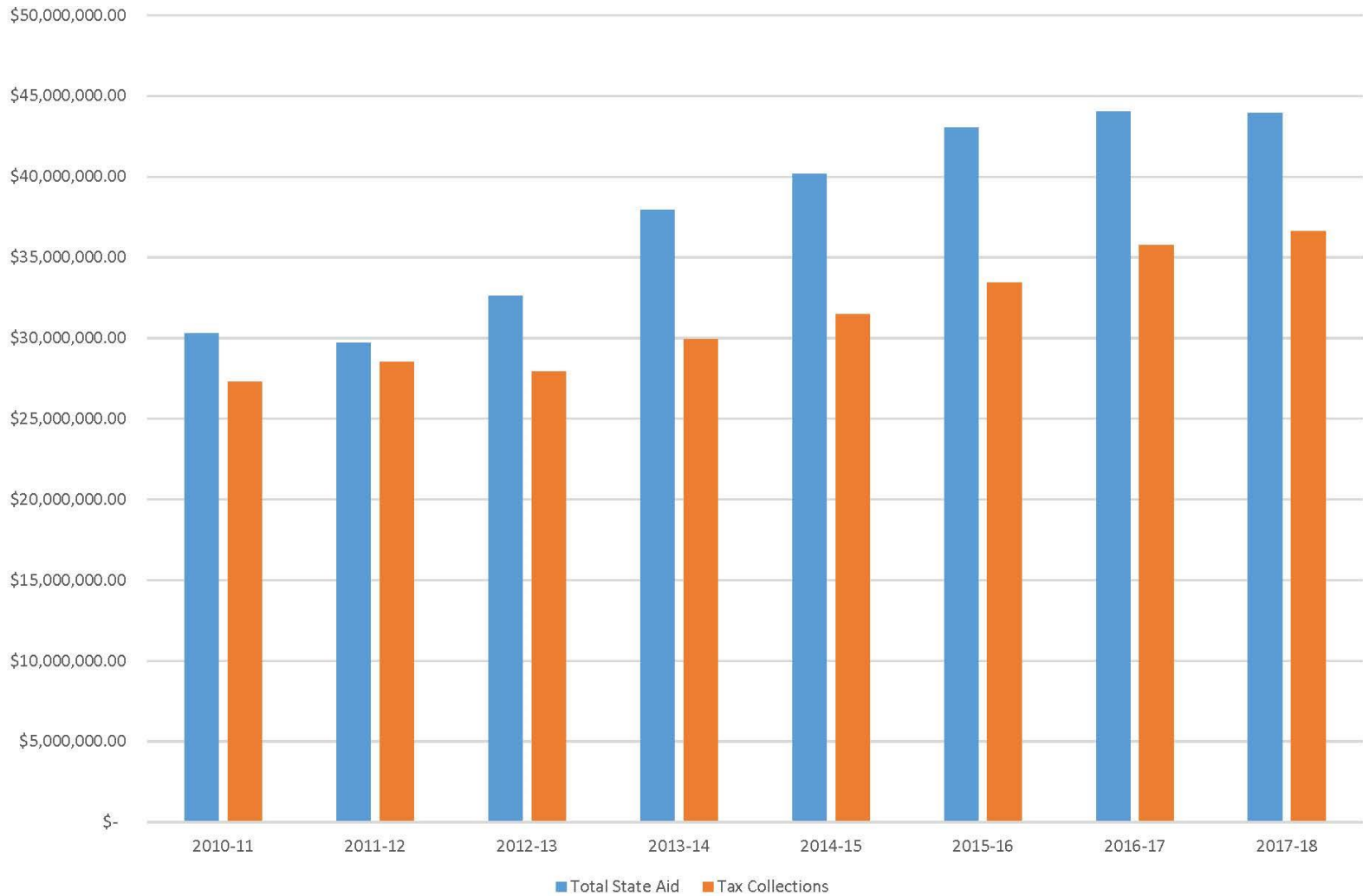
Property Value History



Property Value vs. State Certified Property Values (Prior Year)



Foundation and Available School Fund Current and Prior Year Tax Collections



Top Ten Taxpayers

2016 Top Ten Taxpayers			
Name of Taxpayer	Type of Property	Taxable Assessed Valuation	%TAV
Bastrop Energy Partners LP	Utility	150,877,942	4.84%
HR Lost Pines Resort LLC	Resort	96,177,360	3.09%
GENTEX Power Corp	Utility	69,171,290	2.22%
LCRA Transmission Svcs Corp	Utility	31,190,131	1.00%
Bastrop Retail Partnership LP	Retail	29,930,566	0.96%
Electric Reliability Council of Texas Inc	Utility	22,424,132	0.72%
Griffin Industries Inc	Rendering	22,265,757	0.71%
Bluebonnet Electric Coop Inc	Utility	20,493,096	0.66%
Cover, Rox B, Duke M, & Danay C	Automobile	15,246,642	0.49%
The Lodge at Lost Pines LP	Multi Family Housing	15,155,497	0.49%
	Total	422,037,178	13.55%

Potential Property Value/Revenue Loss

- Bastrop Energy Partners LP
 - Protest of Values
- Go Green Partner LP
 - 2015 Taxes - Delinquent
 - 2016 Taxes Unpaid to Date

Enrollment

Attendance

Fiscal Year	Actual Enrollment	Snapshot Enrollment	Total Yearly Change Snapshot	ADA Amount	Total Yearly Change	Percent Increase (Decrease)	Percent of Membership
2001-02	6,681	6,775	286	6,299	260	4.3%	94.2
2002-03	7,100	7,254	479	6,692	393	6.2%	94.2
2003-04	7,374	7,565	311	6,962	270	4.0%	94.5
2004-05	7,579	7,784	219	7,190	228	3.3%	94.8
2005-06	7,797	7,981	197	7,381	191	2.7%	94.6
2006-07	7,941	8,252	271	7,530	149	2.0%	94.6
2007-08	8,304	8,538	286	7,832	302	4.0%	94.3
2008-09	8,450	8,769	231	8,030	198	2.5%	95.0
2009-10	8,555	8,936	167	8,175	145	1.8%	94.4
2010-11	8,835	9,075	139	8,391	216	2.6%	95.0
2011-12	8,898	9,109	34	8,458	135	1.6%	95.0
2012-13	9,076	9,302	193	8,625	167	1.9%	95.0
2013-14	9,282	9,575	273	8,831	206	2.4%	95.1
2014-15	9,769	9,928	353	9,215	351	3.9%	95.0
2015-16	9,900	10,278	350	9,529	315	3.4%	95.6
2016-17 Estimates		10,539	261	9,794	265		
Sixteen Year Average			253		235	3.1%	94.8

**Average Enrollment Growth
Per Year
253**

**Average ADA Growth Per Year
235
3.1%**

Bastrop ISD

Fast Growth District

- Designated Fast Growth District in 2016-17
- Enrollment growth of last 5 years of 10% or more
 - 2010-11 Enrollment 9,075
 - 2015-16 Enrollment 10,278
- 5 year Enrollment Change # 1,203
- 5 year Enrollment Change % - 13.30%

Bastrop ISD

Fast Growth District

75 Fast Growth District in Texas

Bastrop ISD received an additional Instructional Materials Allocation this year for having high growth

2017-18
General Fund
Preliminary Revenue Estimates
Current Law

Preliminary Revenue	2016-17 as amended	2017-18 Preliminary	Difference
Local & Intermediate Revenue	\$36,675,287	\$37,427,978	\$752,691
State Revenue Sources	47,640,240	47,325,458	(314,782)
Federal Revenue Sources	951,886	907,066	(44,820)
Total Revenues	\$85,267,413	\$85,660,502	\$393,089

Legislative Information

HB 21

- Eliminates the transportation, high school, and staff salary allotment.
- Increase Basic Allotment from \$5,140 to \$5,350
 - \$472,000 additional state aid
- Adds a Dyslexia Allotment
- Provides for a grant program to provide transition aid

Legislative Information

SB 2145

- Complete change to current funding program

Budget Process

- Monitor Legislative Action
 - Calculate budget scenarios
- Monitor Enrollment and Attendance
 - Calculate budget scenario
- Property Value
 - Certified Preliminary Values – April 2017
- Prioritize needs based on Priority Goals